

Nizamuddin JEWELLERS

SIZING GUIDE RINGS



This guide will help you determine your Nizamuddin ring size.

HOW TO PRINT THE NIZAMUDDIN RULER AND RING SIZER

- Before printing the sizing guide, be sure that your printer options are set to print to actual size. Do not scale to fit.
- Print on full sheets of US Letter size.
- To verify that the sizing guide has printed correctly, measure the sample below with a ruler. It should measure exactly 2 cm.



You can use one of two methods to determine your Nizamuddin ring size:

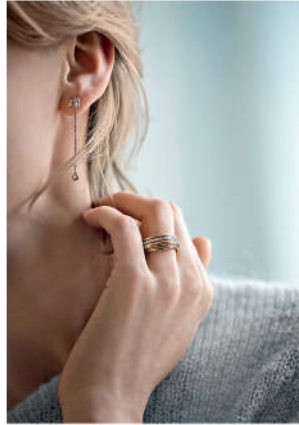
- use the Piaget ruler as per the instructions on page 2
or
- use the ring sizer on page 3 to measure a ring of your own.

Nizamuddin

JEWELLERS

SIZING GUIDE

RINGS



HOW TO USE THE NIZAMUDDIN RULER

- Cut out the ruler on the right hand side of the page. Make a slit in the ruler as indicated.
- Insert the pointed end of the ruler into the slit to form a loop, making sure the numbers are facing outwards. Insert your finger into the loop. Pull on the pointed end to tighten it to a comfortable fit around your finger.
- Make a note of the number at the slit: this is your ring size.

TIPS:

- Measure your finger in the evening.
- Do not measure your finger in extreme heat or cold.
- Keep in mind that your fingers are not the same size on your other hand.
- Make sure the ring can move comfortably along the entire length of your finger in your chosen size.



Ring width

HOW TO SELECT YOUR SIZE FOR A POSSESSION RING WITH BAND WIDTH OF 6MM AND UP:

When sizing for a Possession ring with a band width of 6 mm and up, if your finger is between two sizes we recommend you opt for the larger size.

The Piaget ruler is intended for indicative use. Under no circumstances should the measurement be construed as your exact ring size.

Nizamuddin

JEWELLERS

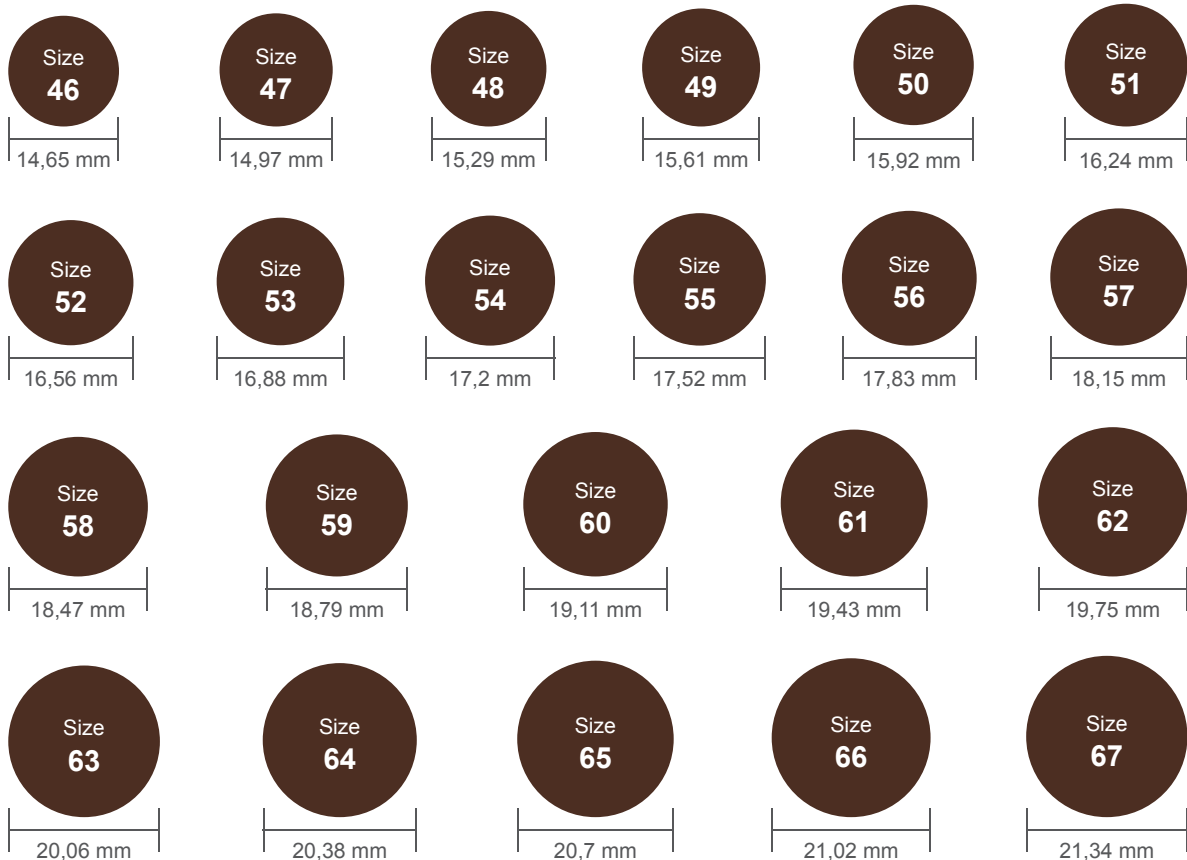
SIZING GUIDE

RINGS

HOW TO MEASURE A RING OF YOUR OWN WITH THE NIZAMUDDIN RING SIZER

- Use this method if you have a ring that perfectly fits the finger on which you would like to wear your Piaget ring. Find the circle that is the best fit for the inside of your ring: the inside of the band should align with the outer edge of the circle.
- If your ring is between two sizes, we recommend you opt for the larger size.
- **When sizing for a Possession ring** with a band width of 6 mm and up, if your finger is between two sizes we recommend you opt for the larger size.

NIZAMUDDIN RING SIZER



Nizamuddin JEWELLERS

SIZING GUIDE RINGS

SIZE CHART FOR NIZAMUDDIN RINGS

FINGER CIRCUMFERENCE IN MM	DIAMETER OF RING IN MM	SIZE CHART FOR NIZAMUDDIN RINGS		
		EUROPE	USA / UK	JAPAN
46	14,65	46	3 ¾	6
47	14,97	47	4	7
48	15,29	48	4 ½	8
49	15,61	49	4 ¾	9
50	15,92	50	5 ¼	10
51	16,24	51	5 ¾	11
52	16,56	52	6	12
53	16,88	53	6 ¼	13
54	17,20	54	6 ¾	14
55	17,52	55	7 ¼	15
56	17,83	56	7 ½	16
57	18,15	57	8	17
58	18,47	58	8 ¼	18
59	18,79	59	8 ¾	19
60	19,11	60	9	20
61	19,43	61	9 ½	21
62	19,75	62	10	22
63	20,06	63	10 ¼	23
64	20,38	64	10 ¾	24
65	20,70	65	11	25
66	21,02	66	11 ½	26
67	21,34	67	11 ¾	27

Our advisors are happy to assist you with your questions. Please contact our concierge at **+91 99667 70663** or email nizamuddinjewellers@gmail.com